

Load Shed A/C

by, All Professional Industries

Installation / Technical Manual

This manual should remain with the unit.

DANGER

**ONLY QUALIFIED ELECTRICIANS OR CONTRACTORS SHOULD
ATTEMPT INSTALLATION!**

READ THIS MANUAL THOROUGHLY!	INSTALLATION AS FOLLOWS:
-------------------------------------	---------------------------------

INTRODUCTION

Thank you for purchasing the Load Shed A/C by All Professional Industries. Every effort was expended to make sure that the information and instructions in this manual were both accurate and current at the time the manual was written. However, the manufacturer reserves the right to change, alter or otherwise improve this product(s) at any time without prior notice.

READ THIS MANUAL THOROUGHLY

If any portion of this manual is not understood, contact us at (847)516-8882.

HOW TO OBTAIN SERVICE

If the Load Shed A/C requires service, call (847)516-8882 to locate at servicing dealer in your area.

EQUIPMENT DESCRIPTION

The Load Shed A/C assembly is used to automatically alternate 2 air conditioners or any load 10A or under while in generator mode. The 2 air conditioners will only alternate automatically when the transfer switch is in the generator position.

Once installation is complete, the Load Shed A/C will operate automatically without any need for user intervention or routine maintenance.

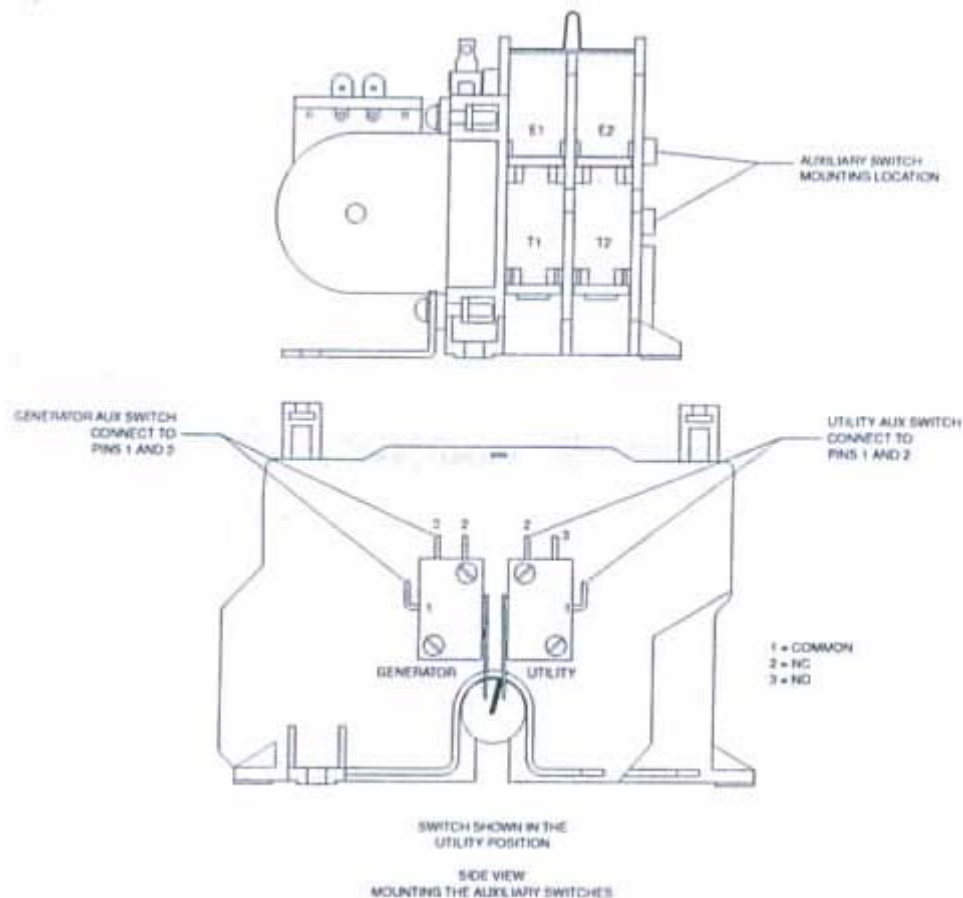
UNPACKING AND ASSEMBLY

If you purchased this device without an enclosure, install this device into your transfer switch. If you purchased this device with the enclosure, see the below installation instructions.

Every Load Shed A/C is tested thoroughly before it leaves manufacturing.

INSTALLATION

1. Install the Load Shed A/C enclosure as close to the transfer switch as possible. (Note: The Load Shed A/C Nema 1 enclosure is rated for indoors only.)
2. Turn off the 2 breakers that feed the 2 air conditioners.
3. Turn off each thermostat that controls both air conditioners.
4. Locate the thermostat wiring for one of the two air conditioners and cut the sheathing back approximately 6 inches. Cut the Yellow wire and splice 2ea #18 gauge thermostat wires, one to each cut end. Run both wires from the cut to the Load Shed A/C and install 1 wire to each terminal labeled Q1.
5. Follow the same procedure for the 2nd air conditioner. Run both wires to the Load Shed A/C and install 1 wire to each terminal labeled Q2.
6. Turn the breakers back on for each air conditioner.
7. Test both air conditioners by setting the thermostats so that both air conditioners turn on.
8. If both air conditioners turn on, move to step 9. If not, go back to step 4.
9. Turn the power off feeding the transfer switch.
10. Turn the generator to the OFF position.
11. Run a conduit from the transfer switch to the Load Shed A/C.
12. Install the auxiliary switch (Sold Separately in the Load Shed A/C Installation Kit) to the transfer switch. The auxiliary switch needs to be added to the transfer switch to provide switch position sensing and 120V to the Load Shed A/C. The following drawing shows 2 auxiliary switches. The Load Shed A/C only needs the lower switch position that is the generator position. The bottom drawing, (switch shown on left) shows the side illustration of the transfer switch where the auxiliary switch is to be installed.




13. If you purchased the installation kit:

- Install the tap connector to one of the two generator power lugs.
 - Install the included 5 Amp fuse block and fuse.
 - Install the included wire from the tap connector to one side of the fuse block.
 - Install the second included wire from the fuse block to the auxiliary switch pin #1. (Note: The remainder of installation parts needed is to be customer supplied).
14. Install a neutral wire (min. #18 gauge) from the transfer switch's neutral lug and run wiring through the previously installed conduit to the top of the Load Shed A/C labeled "N".
 15. Install a constant hot wire (min. #18 gauge) using a 15A 120V breaker that will be on utility and generator to the top of the Load Shed A/C labeled "L1".
 16. Install another (min. #18 gauge) wire from the transfer switch's previously installed auxiliary switch pin #3 and run wiring through the conduit previously installed to the top of the Load Shed A/C labeled "I1".
 17. The built in timer is defaulted for 60 minutes for each air conditioner. (Setting the timer for other than 60 minutes, see below).
 18. Turn utility back on and turn the generator to automatic.

TESTING THE INSTALLATION

- A. Turn both thermostats to their lowest setting and wait until both air conditioners turn on.
- B. After both air conditioners turn on, turn OFF utility.
- C. The automatic generator will start and the transfer switch will transfer to generator mode, engaging the auxiliary switch and giving the Load Shed A/C 120v to I1.
- D. The air conditioner connected to the Q1 terminals will be running. (Note: Some air conditioners have a delay before it will start).
- E. After the time runs out on the first timer, it will jump to the second timer, turning off the first timer automatically. The second air conditioner hooked up to the Q2 terminals will now turn on.
- F. When the second timer expires, the Load Shed A/C will automatically start the process over again turning on timer one.
- G. If both air conditioners run as indicated above, all components are installed properly. If not, call (847)516-8882 and ask for technical support.
- H. Turn ON utility. When the transfer switch switches back to utility, the auxiliary switch is deactivated and the Load Shed A/C is deactivated, but should stay on. Both air conditioners will now operate normally.

TIMER OPERATION

	<p>The default is 60 minutes each A/C. To set a different on/off time during generator operation:</p> <ol style="list-style-type: none">1. Press escape for 5 seconds2. Press okay3. Press the appropriate arrows to set the desired time4. Press okay5. Press escape6. You're done
---	---

